

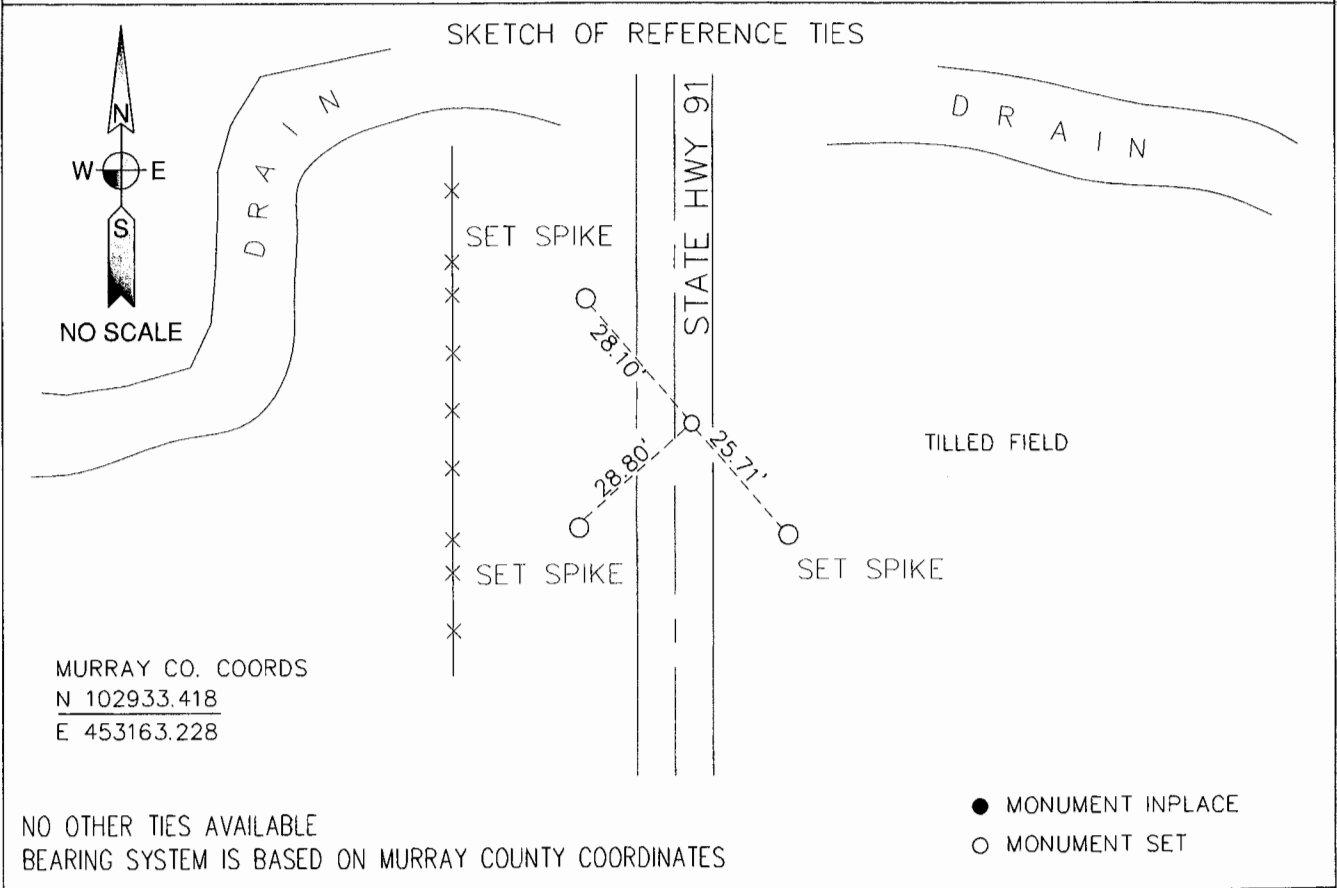
CERTIFICATE OF LOCATION OF GOVERNMENT CORNER

WEST 1/4 Corner of Section 31, Township 105N, Range 42W, 5th P.M.

STATE OF MINNESOTA, County of MURRAY

At the corner location shown on the sketch:

- On _____ found a _____
DATE
- left monument as found, lowered monument, removed monument (explain)
- On 3-5-08 placed a MAG NAIL 3'± EAST OF HWY 91 CENTERLINE
DATE



Statement of evidence relative to this corner location is on back of page.

I hereby certify that this document and the data contained herein was prepared by me or under my direct supervision.

[Signature] 3-17-08
SURVEYOR'S NAME DATE

- Registration No. 40827
- Land Surveyor, Professional Engineer
- County Surveyor, County Engineer

OFFICE OF THE COUNTY RECORDER
County of MURRAY

I hereby certify that this document was filed in the Co. Recorders office at _____ M. on the _____ day of _____ A.D., 20____

County Recorder [Signature], Deputy

DOCUMENT NO. MAR 18 2008

STATEMENT OF EVIDENCE:

WEST 1/4 CORNER, SECTION 31, T. 105 N., R. 42 W.,
MURRAY COUNTY, MINNESOTA

- 1861 J.W. Myers, U.S. Deputy Surveyor, monumented corner.
- 2008 Ulteig Engineers, Inc., Survey Crew, Bob Kohler Party Chief, placed PK-nail 3' east of N-S centerline of State Highway 91.
Ties: NW-28.10' to a set spike nail in road shoulder;
SW-28.80' to a set spike nail in road shoulder;
SE-25.71' to a set spike nail in road shoulder.